

Local understandings of climate justice and implications for community-level forest conservation

Dr. Yingshan Lau

Research Fellow, Climate Governance of Nature-based Carbon Sinks in Southeast Asia
Asia Research Institute, National University of Singapore

with

Ms. Somvilay Chanthalounnavong, National University of Laos

Mr. Siphanh Daovongdeuan, Souphanouvong University

Dr. Miles Kenney-Lazar, University of Melbourne

Dr. Sithong Thongmanivong, National University of Laos



Forests as carbon sinks

Clean Development Mechanism (CDM)



UN-REDD
PROGRAMME

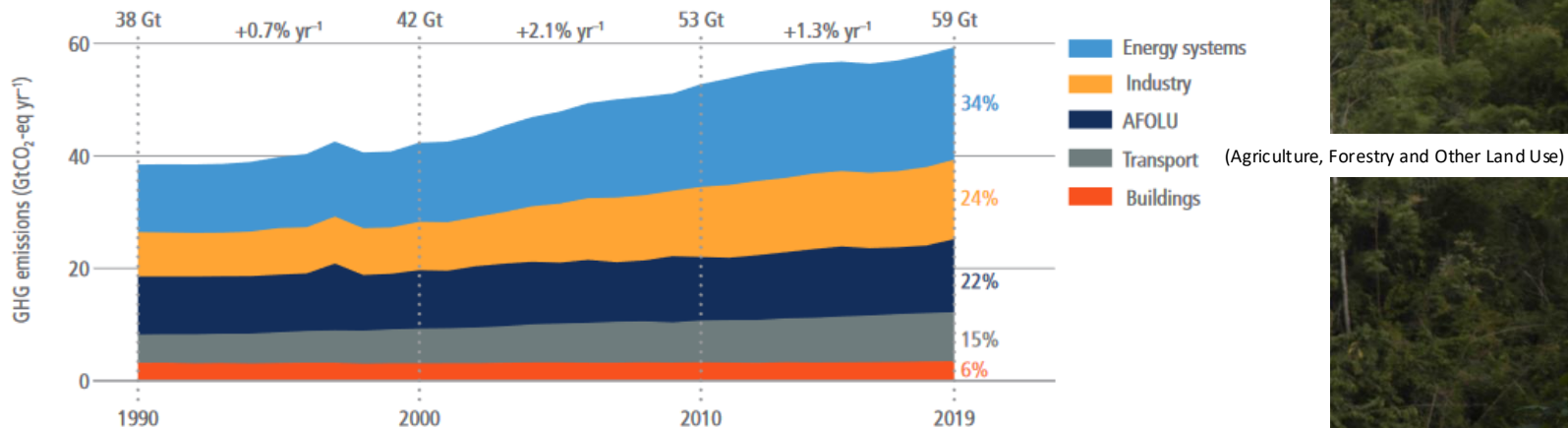


Food and Agriculture
Organization of the
United Nations



UN
environment
programme

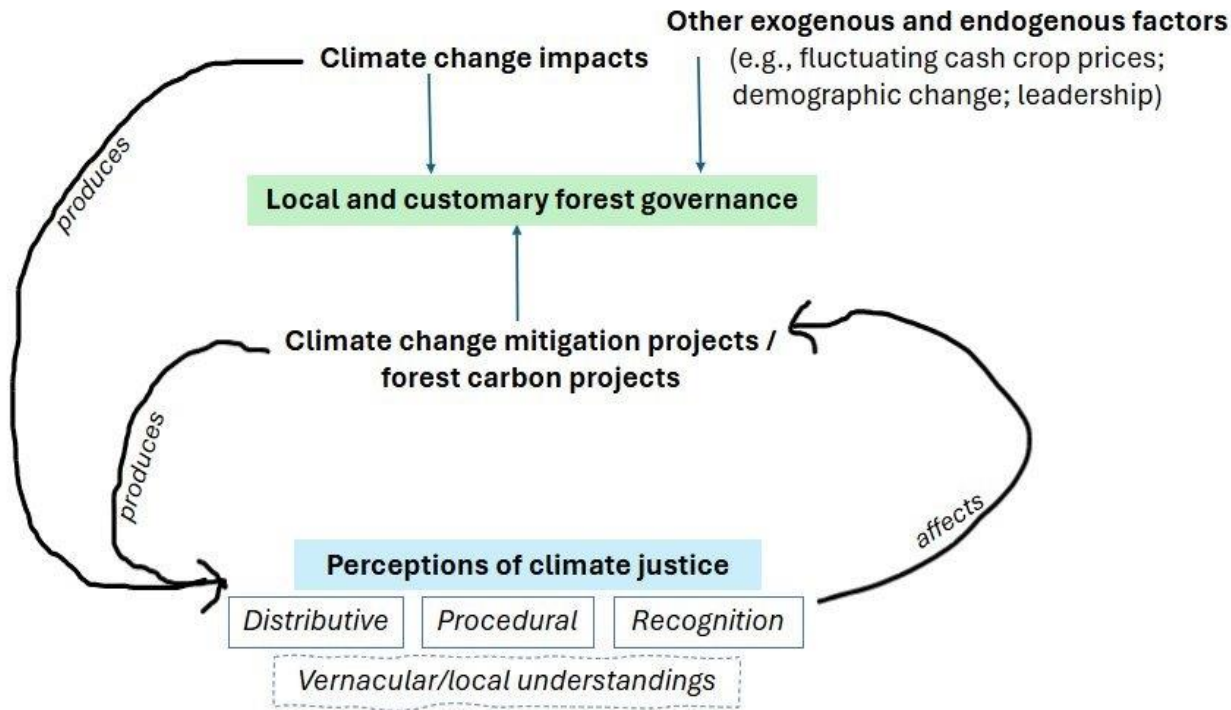
(a) Total global GHG emission trends by sectors



Forests as lived environments

" 'Lived forests'... [as opposed to 'conservation' or 'production' land'] encompass ancestral territory, are actively managed and are used for swidden agriculture, NTFP collection and as riverine habitat. Historically, forests around Southeast Asia covered large areas and were managed as lived forests." (Kull et al, 2024)

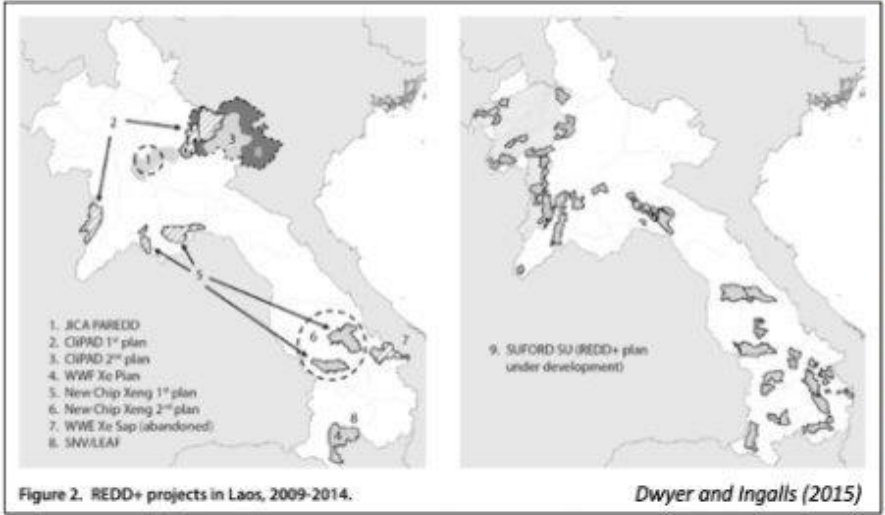




Study questions:

1. What climate injustices do forest-using and forest-proximate local communities face?
2. How do local people perceive climate (in)justices?
3. What are the opportunities and challenges for local-level forest conservation?

Forest carbon projects in Lao PDR



The double injustices of climate change: (1) climate change



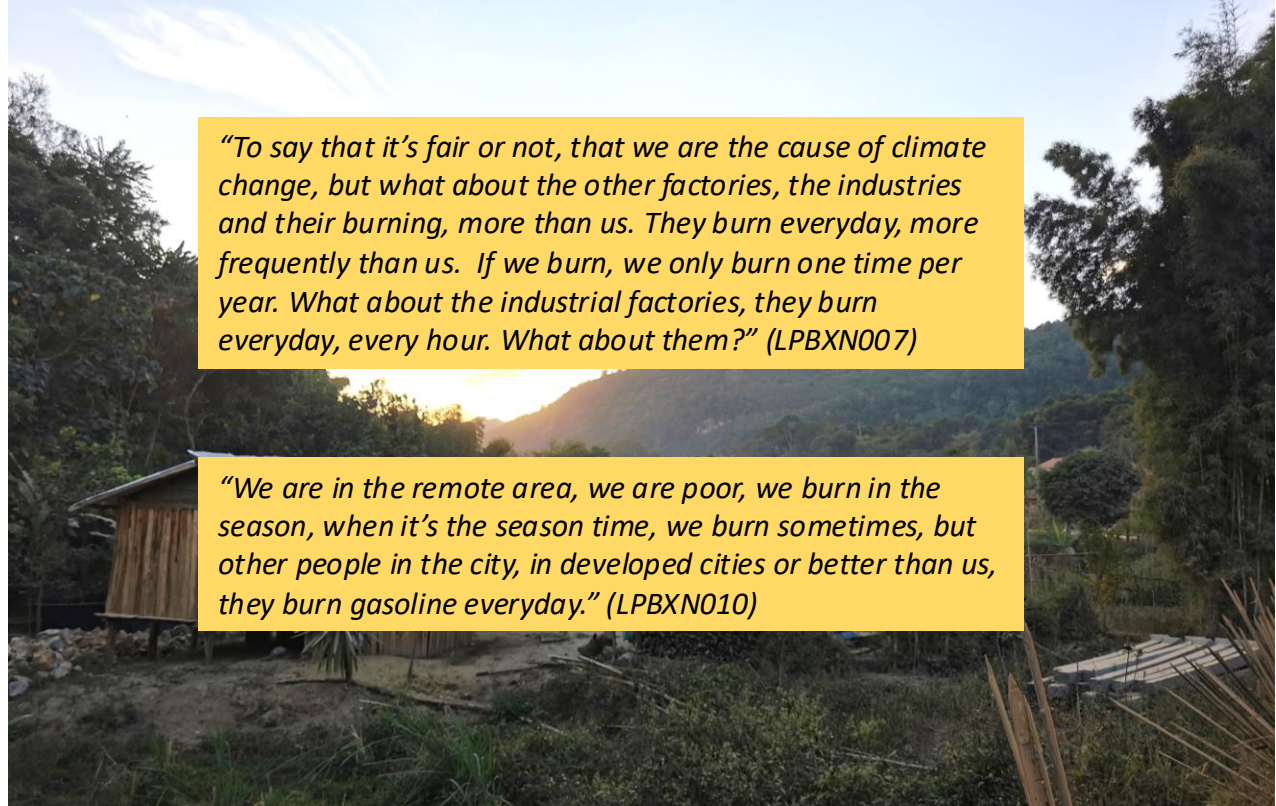
*"In the past, when we got home, it's very cool and no need fan. But now it's very hot. Actually this year and last year, we started to use the fan, **not because we don't have electricity, but because it's really hot, actually very hot.**" (LPBXN010)*



The double injustices of climate change: (1) climate change



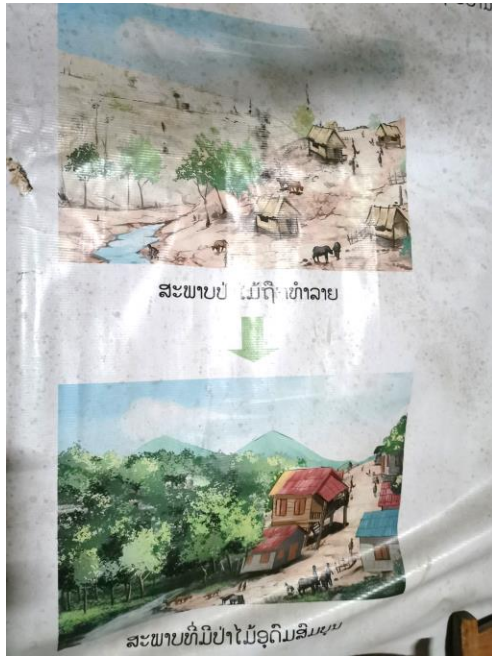
*"In the past, when we got home, it's very cool and no need fan. But now it's very hot. Actually this year and last year, we started to use the fan, **not because we don't have electricity, but because it's really hot, actually very hot.**" (LPBXN010)*



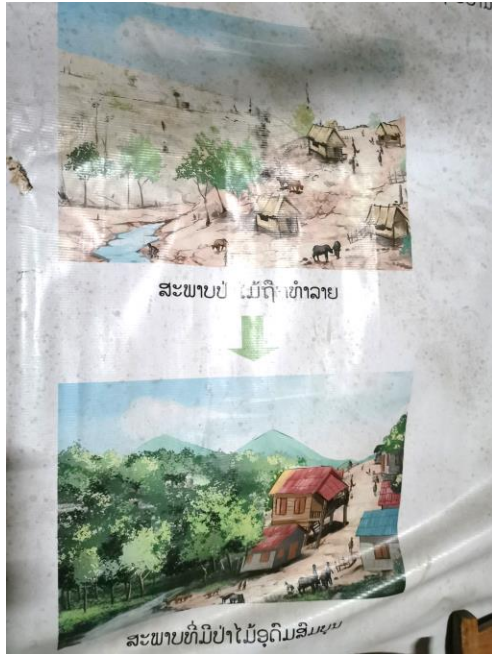
"To say that it's fair or not, that we are the cause of climate change, but what about the other factories, the industries and their burning, more than us. They burn everyday, more frequently than us. If we burn, we only burn one time per year. What about the industrial factories, they burn everyday, every hour. What about them?" (LPBXN007)

"We are in the remote area, we are poor, we burn in the season, when it's the season time, we burn sometimes, but other people in the city, in developed cities or better than us, they burn gasoline everyday." (LPBXN010)

The double injustices of climate change: (2) climate change mitigation programmes

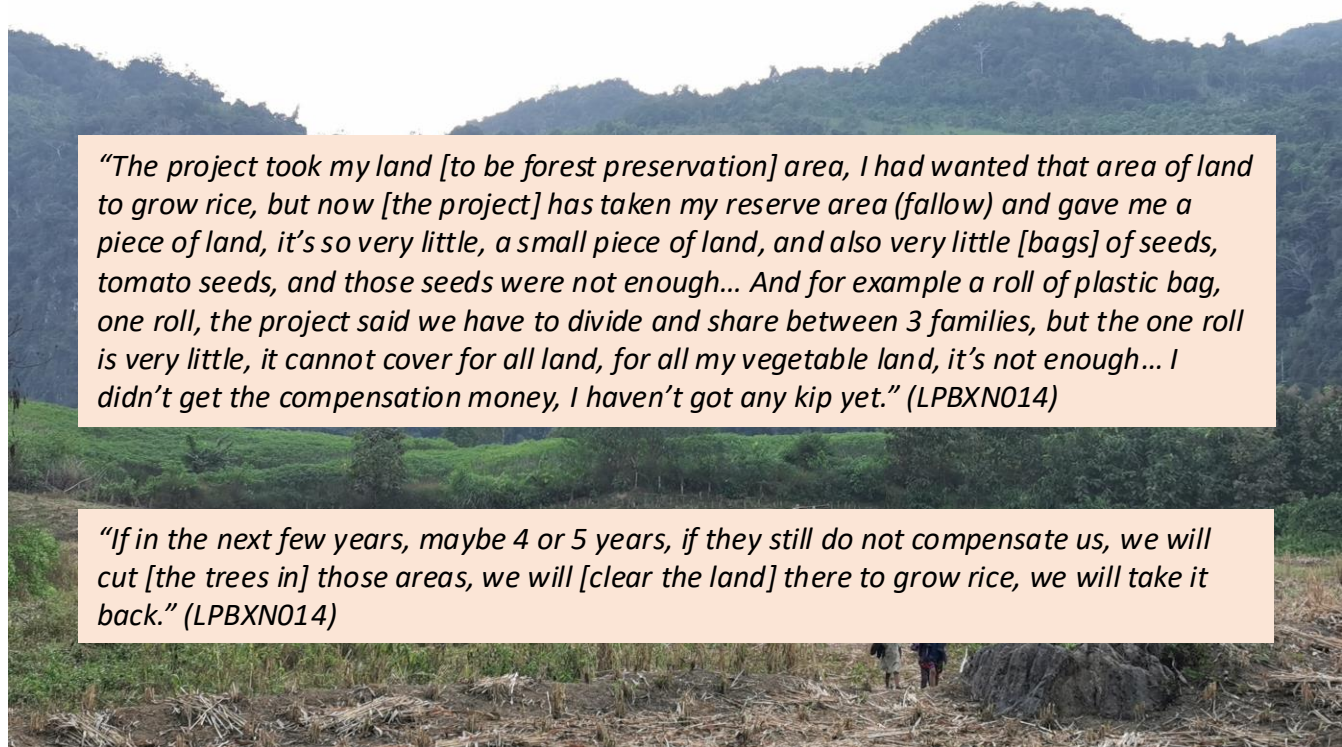


The double injustices of climate change: (2) climate change mitigation programmes



"The project took my land [to be forest preservation] area, I had wanted that area of land to grow rice, but now [the project] has taken my reserve area (fallow) and gave me a piece of land, it's so very little, a small piece of land, and also very little [bags] of seeds, tomato seeds, and those seeds were not enough... And for example a roll of plastic bag, one roll, the project said we have to divide and share between 3 families, but the one roll is very little, it cannot cover for all land, for all my vegetable land, it's not enough... I didn't get the compensation money, I haven't got any kip yet." (LPBXN014)

"If in the next few years, maybe 4 or 5 years, if they still do not compensate us, we will cut [the trees in] those areas, we will [clear the land] there to grow rice, we will take it back." (LPBXN014)



The 'community' conundrum

Safeguards

Free, Prior and
Informed Consent
(FPIC)

Grievance Redress
Mechanisms (GRM)

Tenure

Benefit-sharing

Sustainable
Development Goals

Co-benefits



The 'community' conundrum

Safeguards

Free, Prior and
Informed Consent
(FPIC)

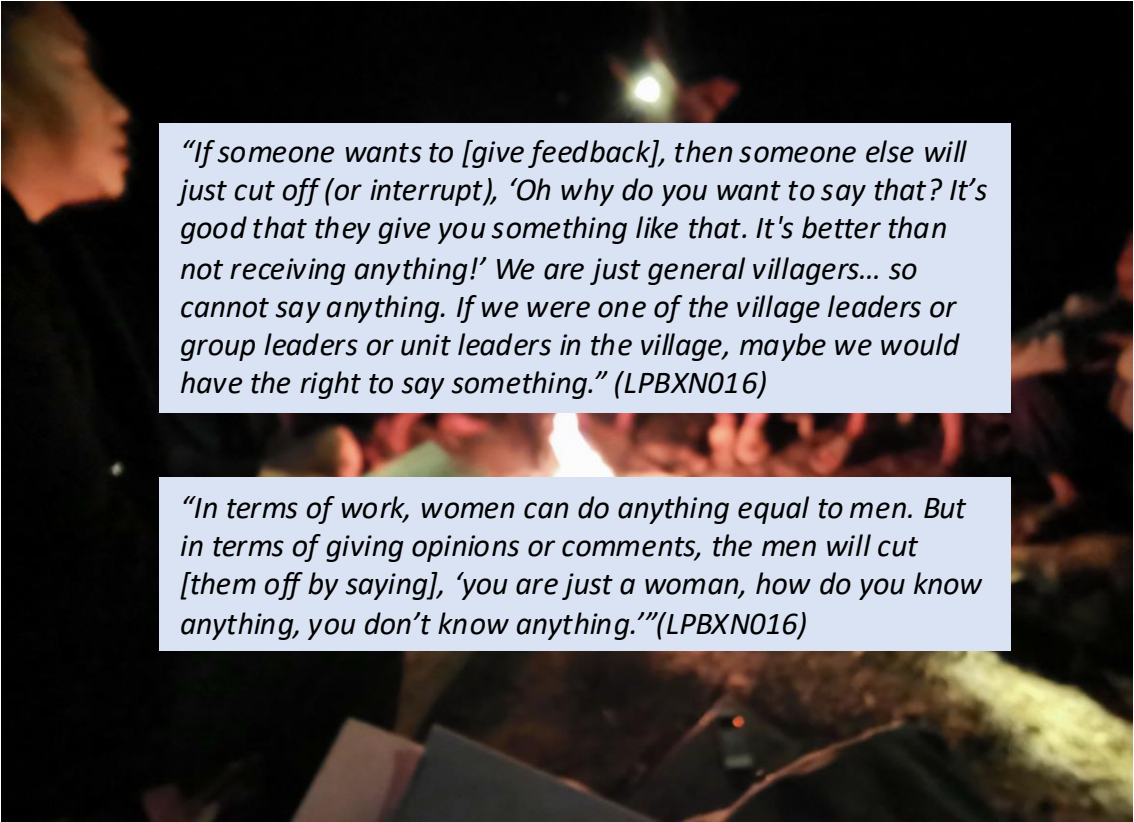
Grievance Redress
Mechanisms (GRM)

Tenure

Benefit-sharing

Sustainable
Development Goals

Co-benefits



"If someone wants to [give feedback], then someone else will just cut off (or interrupt), 'Oh why do you want to say that? It's good that they give you something like that. It's better than not receiving anything!' We are just general villagers... so cannot say anything. If we were one of the village leaders or group leaders or unit leaders in the village, maybe we would have the right to say something." (LPBXN016)

"In terms of work, women can do anything equal to men. But in terms of giving opinions or comments, the men will cut [them off by saying], 'you are just a woman, how do you know anything, you don't know anything.'" (LPBXN016)

Nationally/locally:
- Community-building





Nationally/locally:

- Community-building

Globally:

**- Think reparatively,
support adaptation**

**- Transition away
from fossil fuels!**

“It’s very important to slow down the changes in the weather, because we are farmers, otherwise we cannot keep the same pattern of practice in our field. The growing season might be changed. Don’t escalate the weather changes, don’t push it too fast, make the rate of change slower.” (LPBXN013)

THANK YOU

Acknowledgements

Tremendous gratitude goes to the villagers of N. Village and H. Village for taking the time to speak with us, despite their very busy schedules during the peak harvesting season in November 2024 - it is through their bodies (and minds) labouring on the land, that the wider society is fed and nourished.

Village leaders of H. Village and N.Village

Mr Phouvieng Chittavong Thor, Head of the District Agriculture and Forestry Office in Xieng Nguen district, Luang Prabang Province

Mr Hongkham from the Provincial Agriculture and Forestry Office, Luang Prabang

Ms Melissa Low, Research Fellow, Centre for Nature-based Climate Solutions, National University of Singapore

CGSEA; MRLG; FAO (Laos)

